

Clinical Context:

54 yo, alcoholic-cirrhosis Child C12 with esophageal varices grade I° in 2015

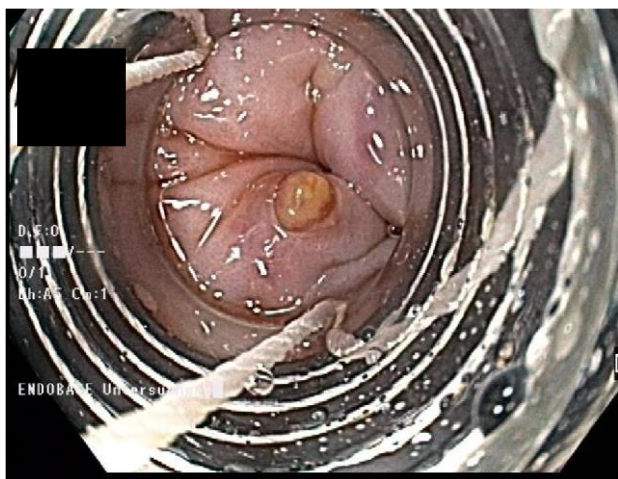
Currently massive Hematochezia and Anemia



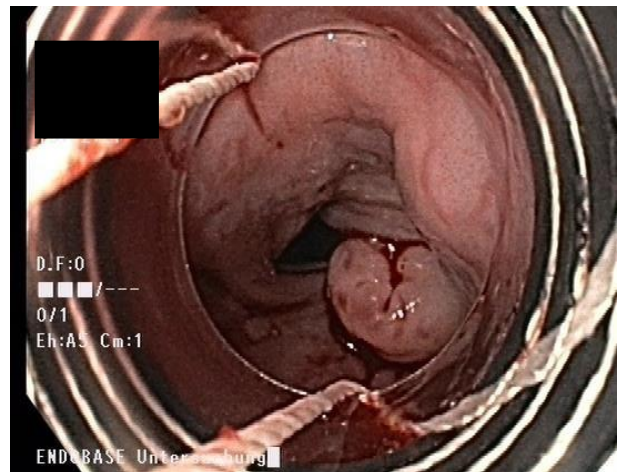
Portal hypertensive gastropathy



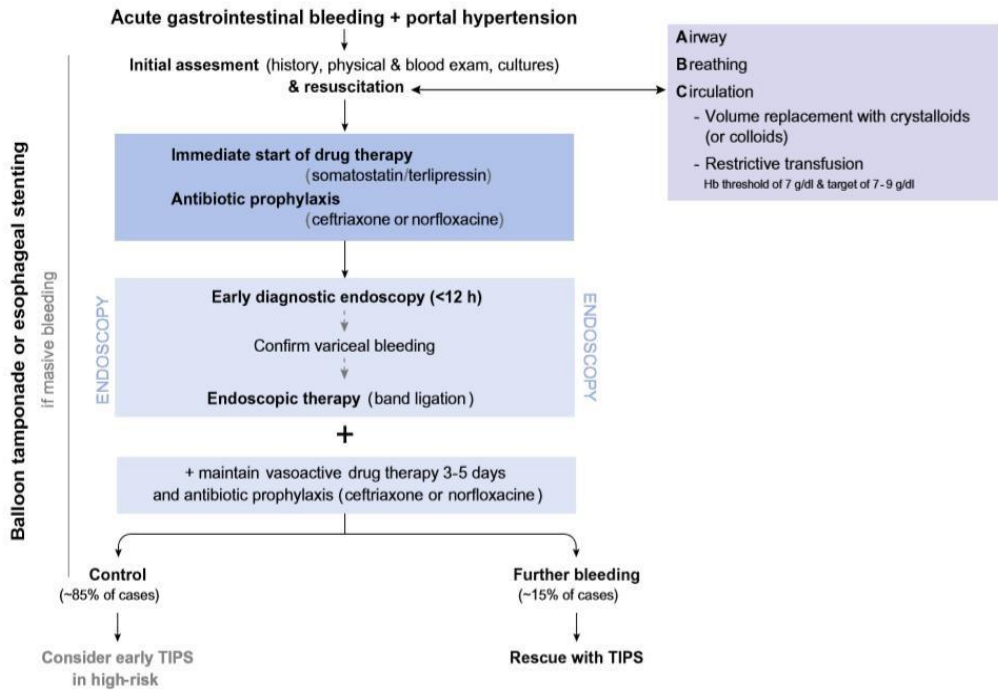
Esophageal varices grade II with white nipple



Ligatures on white nipple sign



Short intense bleeding during aspiration and optimal result after ligation



Reference: European Association for the Study of the Liver. Electronic address: easloffice@easloffice.eu; European Association for the Study of the Liver. EASL Clinical Practice

Guidelines for the management of patients with decompensated cirrhosis. J Hepatol. 2018 Aug;69(2):406-460. doi: 10.1016/j.jhep.2018.03.024. Epub 2018 Apr 10. Erratum in: J Hepatol. 2018 Nov;69(5):1207. PMID: 29653741.