

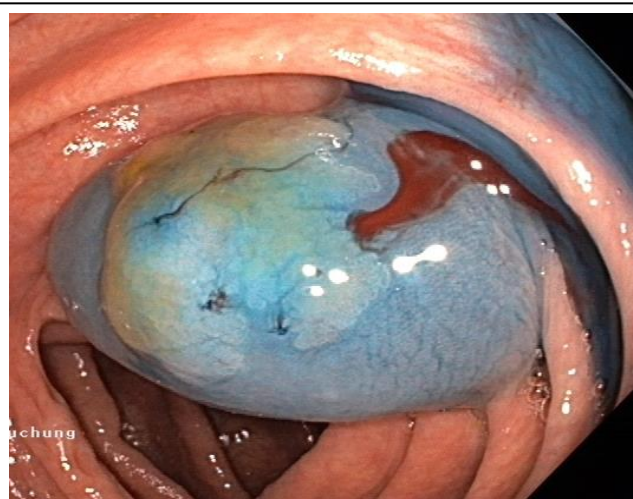
Clinical Context:

68 yo ♂

Colonoscopy in a tertiary center with a large sessile polyp in the ascending colon, not removed. Patient referred to our center for the polyp removal.



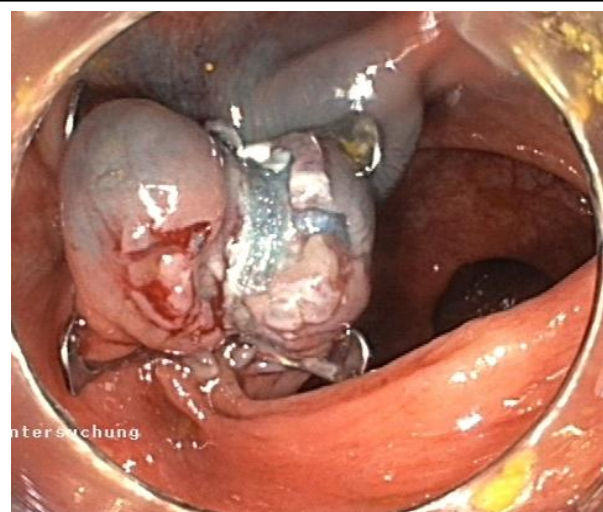
2 cm sessile polyp in colon ascendens.



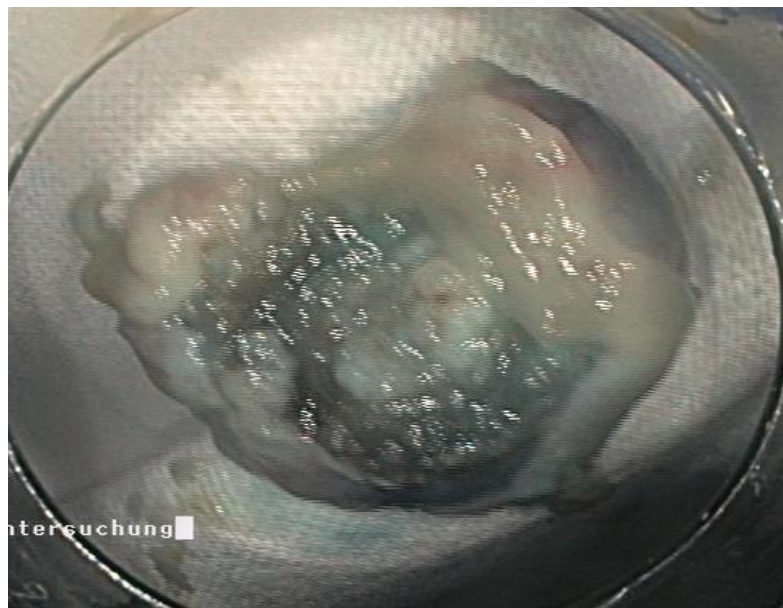
Polyp after injection and before ablation.



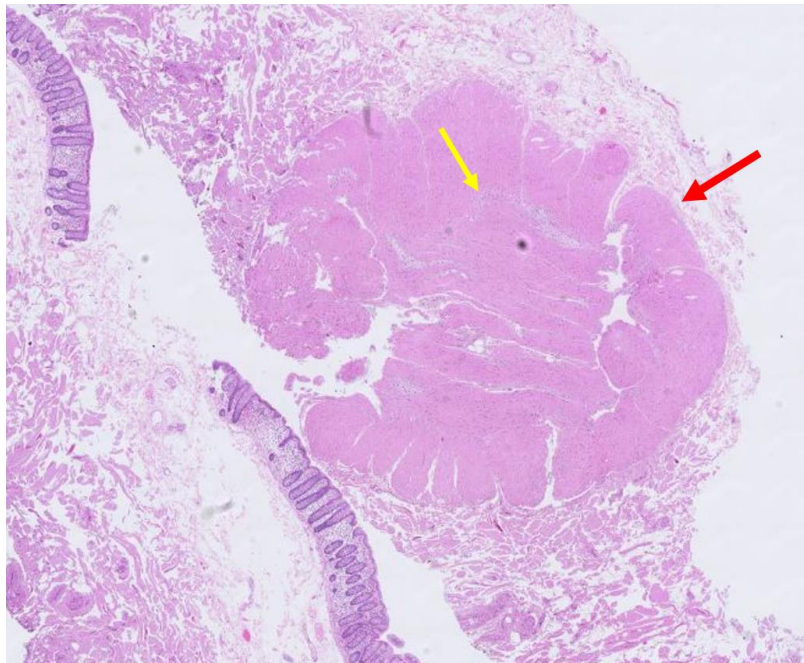
Resection in one piece with snare with **target sign** on the back of the polyp. The **lamina muscularis propria** appears white.



Application an OTSC clip with complete closure. Ambulant patient without other complications.



Macroscopic view of the polyp after resection.



Histologic image showing the lamina **muscularis propria** including the **myenteric plexus**.

#### TAKE HOME MESSAGE:

**The target sign** is an endoscopic marker for the resection of the **muscularis propria** and a potential perforation. Early detection is of great importance, as serious complications, including secondary need of a stoma, can be prevented with direct endoscopic intervention.